



## DAMM<sup>®</sup> Service Box SB422

The compact, flexible DAMM Service Box SB422 is designed to ensure full functionality of up to two DAMM MultiTech Outdoor Base Stations (DAMM BS422). It includes a power supply, a PC and an ethernet switch and allows connection of an external backup battery.

### Optimized PC platform and switching

The SB422 PC is optimized for local base station control, with all necessary software pre-installed on delivery. It enables inter-node communication and integration of gateway applications and VPN connections.

The built-in ethernet switch enables successful communication and supports time synchronisation between the connected base stations via Precision Time Protocol (PTP). Cabling is kept to a minimum, with the ethernet switch requiring just one ethernet cable per base station.

### Status overview at a glance

Status and alarm indicators inside the SB422 show the status of the power supply, link and node controller at a quick glance. This convenient setup also includes various alarm indicators and external alarm routing, enabling quick fault location and repairs.

### Easy installation and maintenance

The SB422 is designed to reduce the time and resources spent on installation and maintenance. Thanks to its size and design, it can be installed directly on a mast. With all connections prearranged, only a few connections need to be made in the field.

Maintenance and service is equally user-friendly. Thanks to the remote connection option on the PC, maintenance and service can be done remotely. For work in the field, a monitor and keyboard can be connected to the PC.

### Built for tough conditions

No matter the ambient conditions, the SB422 remains reliable. All modules in the service box are designed to operate in temperatures ranging from very low to very high, and with its IP65 protection, the SB422 can withstand dusty and wet conditions. In addition, internal circuits provide lightning protection, ensuring high reliability.

### Improve resilience, capacity and security

Networks can be protected against breakdowns by installing a second SB422, which can take over in case of a failure. This setup can also be used to operate up to four BS422 base stations at one location, securing high-capacity radio coverage. To prevent unauthorized access, the SB422 is equipped with a lock.

### Low OPEX

The SB422 has been designed with low OPEX in mind. Apart from its overall low power consumption, maintenance costs are also kept to a minimum. First of all, a redundant setup allows technicians to perform maintenance with the system running and keeps the system running even if one service box breaks down. Secondly, the remote maintenance possibility greatly optimizes resources and manpower.

### Easy Windows upgrade, flexible migration

The SB422 can be used as a replacement for the SB421 service box to run two existing DAMM Outdoor Systems BS421. This provides a gradual and cost-effective migration path to a Windows 10 IoT platform and gives users the option of running a multi-technology network at a later stage.



### DAMM Cellular Systems A/S

Møllegade 68  
6400 Sønderborg  
Denmark

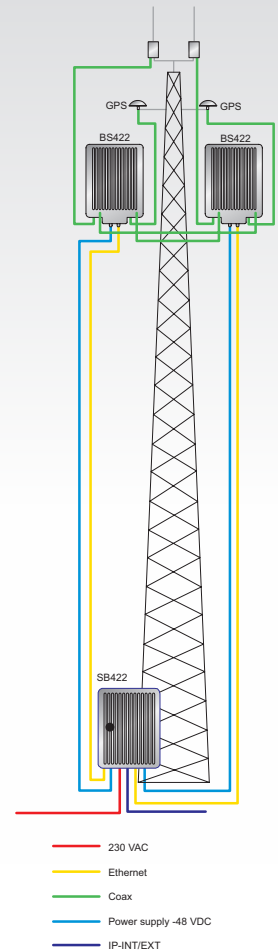
Phone: +45 7442 3500  
Email: sales@dammm.dk  
www.dammcellular.com

# Key specifications

- Power supply and network connections for up to two base stations
- Low OPEX
- Optional redundancy
- Distance SB422–BS422: Up to 50m.

	SB422 Service Box	BS422 Base Station
Power	Input voltage	110–240VAC or -48VDC
	Power consumption	Max. 450W
		95W at 10W TETRA
		150W at 25W TETRA
		200W at 50W DMR/Analog

	SB422 Service Box	BS422 Base Station
Mechanical	Dimensions (HxWxD) (excl. mounting bracket)	38x38x21cm
	Weight	9kg
	Wind area	0.1m <sup>2</sup>
	Operating temperature	-25°C to +55°C
	Storage temperature	-40°C to +85°C
	Encapsulation	IP65
	Lightning protection	Internal



The battery pack shown will be available soon.

Specifications subject to change without notice  
 DAMM and TetraFlex are registered trademarks of DAMM Cellular Systems A/S

